

DIGITAL-DOG

IT PROVIDES AN INVISIBLE SHIELD
OF SECURITY



POWERED BY PAPILO-TEC

ABOUT US

BEECONS Consult WLL is a dynamic consulting and solutions-driven company based in the Kingdom of Bahrain, specializing in delivering advanced technologies and innovative infrastructure solutions across the GCC and MENA region.

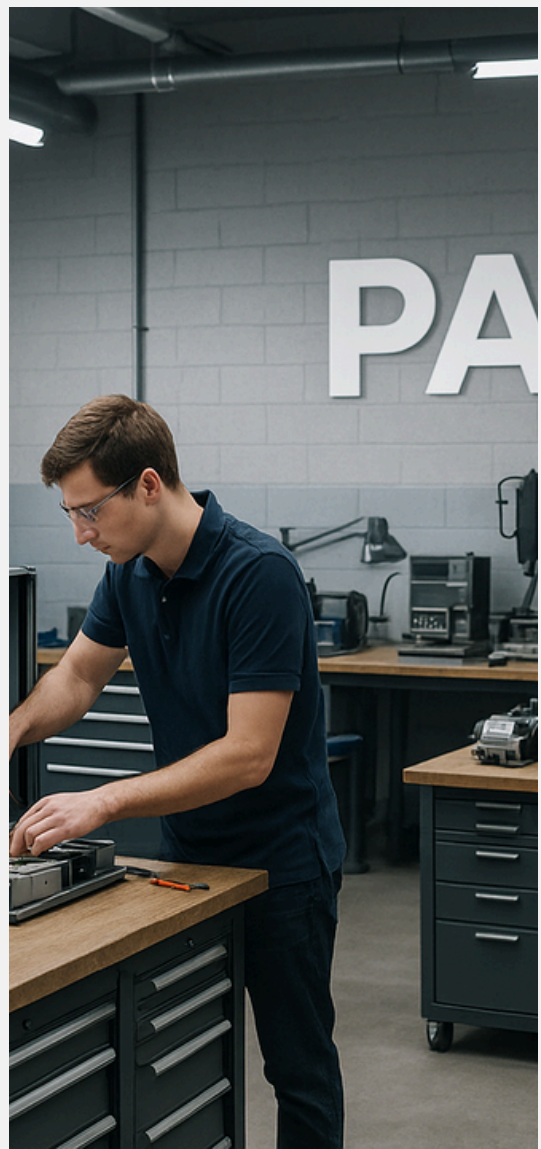
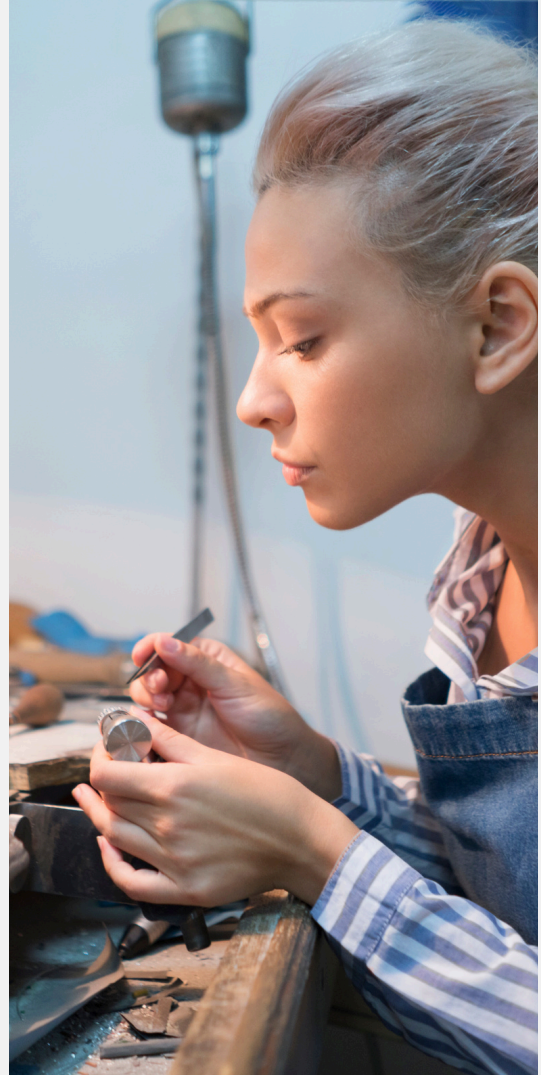
With a strong foundation in regional market expertise, BEECONS acts as a strategic bridge between global technology providers and local market demands, enabling the seamless introduction of cutting-edge solutions tailored to modern business and security needs.

Our focus lies in identifying high-potential technologies and partnering with industry leaders to deliver best-in-class solutions in security, automation, and smart infrastructure. Through our strategic collaboration with PAPILO TECHNOLOGIES LLP, we bring world-class innovations in VIP security systems, smart Control, and intelligent environments to the region.

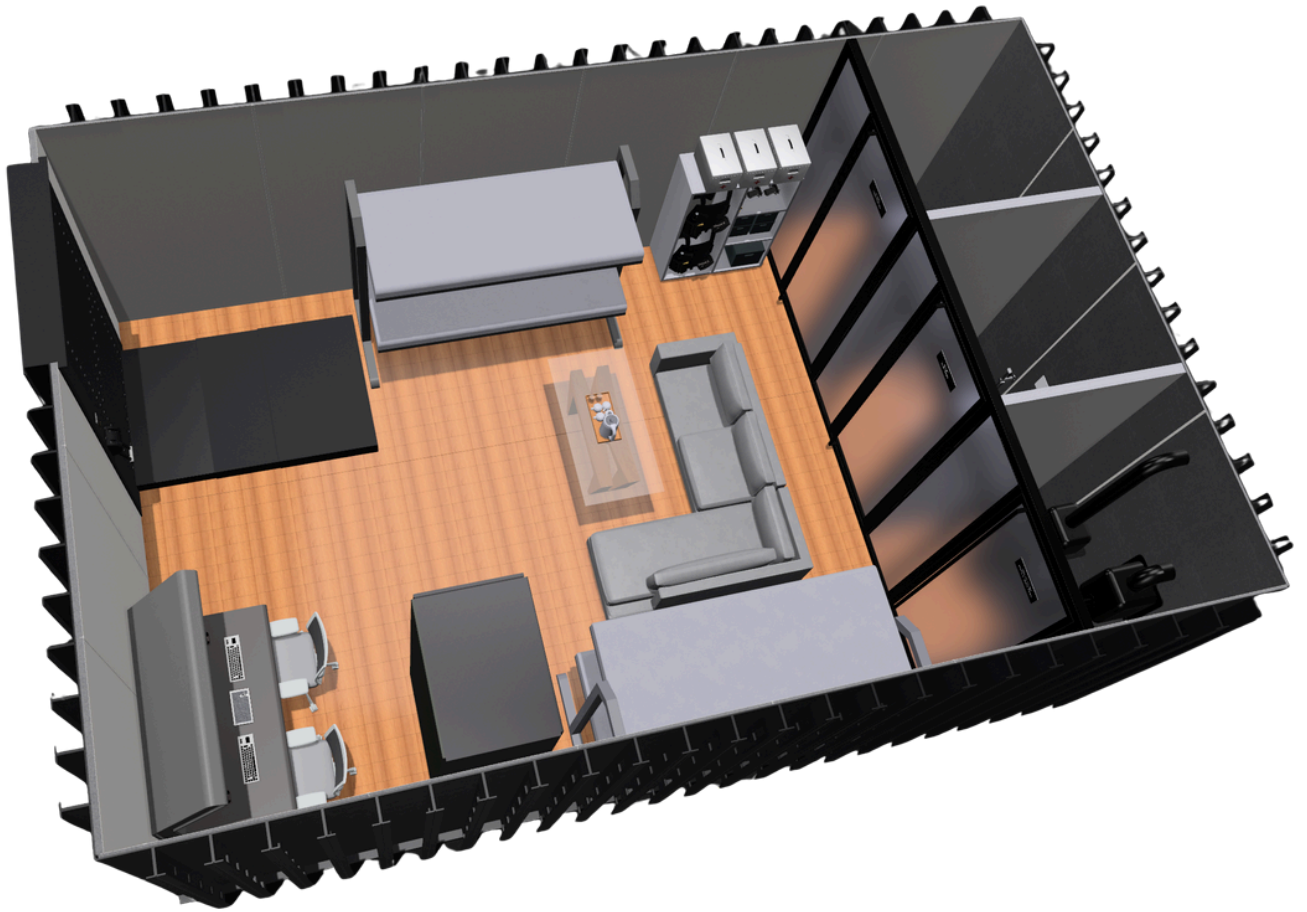
At BEECONS, we are committed to:

- Delivering value-driven, future-ready solutions
- Building long-term partnerships across industries
- Supporting clients with customized, scalable, and reliable technologies

With a vision to contribute to the region's rapid development, BEECONS continues to expand its portfolio by integrating advanced solutions that enhance safety, efficiency, and intelligent living standards.



PANIC ROOM



A Panic room is a custom-engineered secure space designed in accordance with occupancy requirements and intended survival duration. It is equipped with integrated life-support systems, including controlled ventilation, food and water storage, medical provisions, and advanced security infrastructure, ensuring complete safety and operational self-sufficiency during emergency situations.



KEY BENEFITS OF A PANIC ROOM

A Panic Room (Safe Room) is a fortified space designed to provide maximum security and protection in emergencies. PAPILO specializes in building customized, high-end panic rooms with cutting-edge security features.

1. Protection from Intruders

- Acts as a secure hiding place in case of a home invasion or burglary.
- Reinforced walls and doors prevent forced entry.

2. Safety During Natural Disasters

- Designed to withstand earthquakes, hurricanes, and extreme weather conditions.
- Provides shelter and survival support during disasters.

3. Secure Storage for Valuables

- Can function as a vault to store cash, jewelry, and critical documents.
- Fireproof & theft-resistant for added security.

4. Emergency Communication Hub

- Equipped with backup power, communication systems, and surveillance feeds.
- Enables safe communication with authorities without exposure to danger.

5. Protection Against Chemical & Biological Threats

- Features NBC-Filtered Ventilation Systems to protect against gas attacks and chemical leaks.
- Ensures clean, breathable air in hazardous situations.

6. Peace of Mind

- Reduces anxiety by providing a secure retreat in case of emergencies.
- Ideal for VIPs, celebrities, business executives, and high-risk individuals.

PAPILO panic rooms are custom-built to match security needs, ensuring complete safety, privacy, and reliability.



CCU

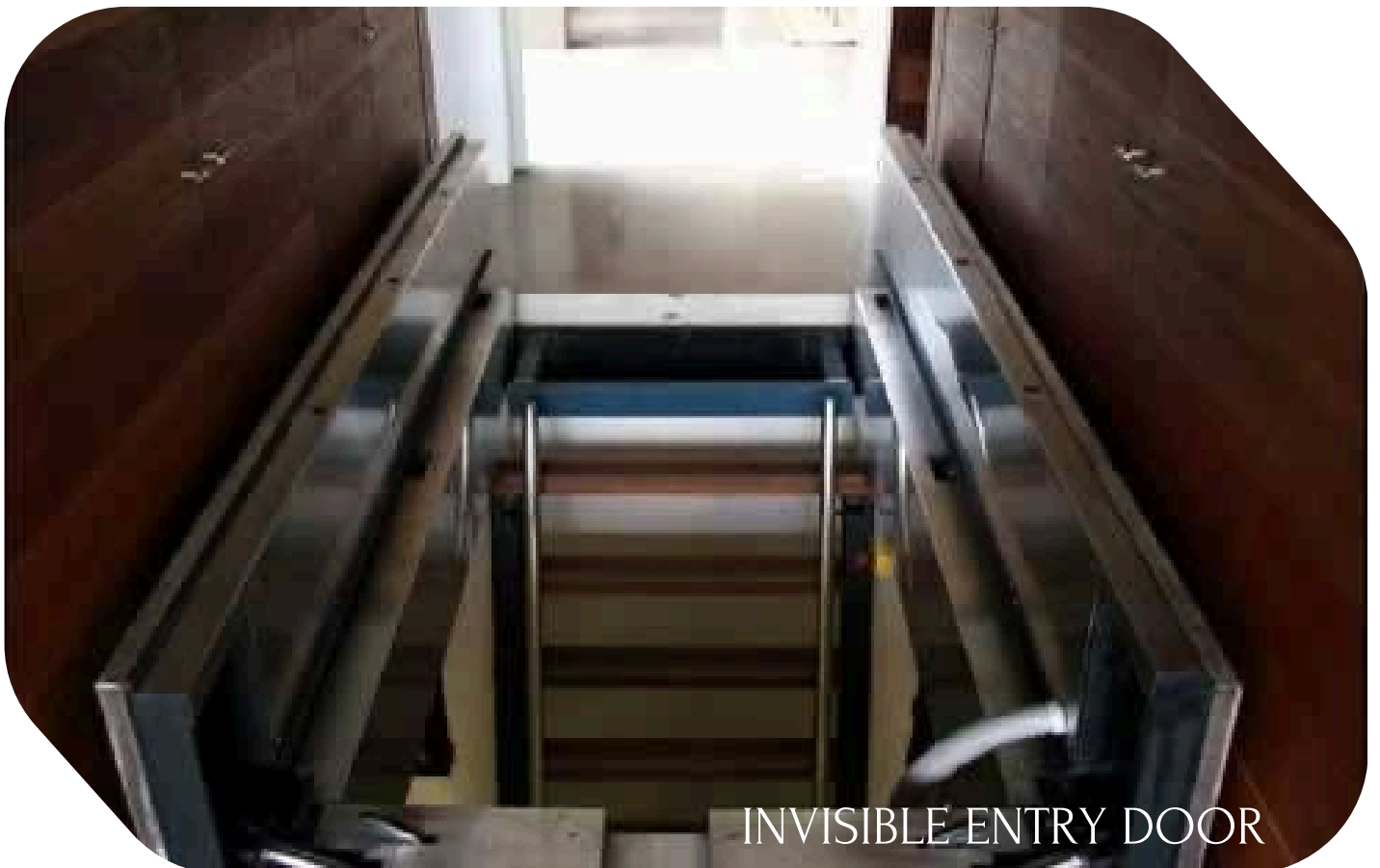


NBC AIR FILTER





VISIBLE ENTRY DOOR



INVISIBLE ENTRY DOOR

PRIVATE PARKING



PRIVATE PARKING WITH UNDERGROUND MECHANISM

- Automated Parking Systems : Provides secure, underground parking solutions with automated lifts and vehicle retrieval systems that ensure vehicles are stored out of sight and protected from tampering.
- High-Security Access Control : Features biometric access controls and encrypted entry systems that allow only authorized users to access the underground parking.
- Environmental Control Systems : Maintains optimal conditions within the parking area, including climate control and fire suppression systems, to protect vehicles from environmental damage.
- Discreet Exit and Entry : Designed with multiple, concealed entry and exit points, allowing VIPs to enter and exit the premises without being detected or followed.
- These bespoke solutions are engineered to provide comprehensive security and peace of mind for VIPs, ensuring that their privacy, safety, and assets are always protected.

DIGITAL VOICE JAMMER



CONFIDENTIAL MEETING ROOMS

- Audio Device Disabling Technology : Utilizes state-of-the-art signal jammers and frequency disruptors to disable any unauthorized recording devices within the room. This ensures that all conversations remain confidential, blocking both traditional and digital recording equipment.
- Sound Masking Systems: Incorporates white noise generators and sound masking technology that prevent eavesdropping by drowning out conversations beyond the room.
- Secure Communication Lines : Features encrypted communication channels for safe and secure conversations, both within the room and for external communication.

AI SURVEILLANCE



The AI CCTV system is designed to provide maximum security and privacy for VIP clients. The system includes high-definition cameras equipped with AI-powered analytics to detect, classify, and respond to various security threats in real-time. The customized algorithm ensures that only authorized personnel are monitored, and any potential threat is instantly flagged.



Climbing Detection : Functionality: Detects climbing activities on structures like walls or fences, triggering alarms to prevent potential intrusions.



Fight Detection : Functionality: Detects physical altercations between individuals using motion analysis and alerts security to intervene promptly.



Sleep Post Detection: Functionality: Identifies when a person is sleeping or in an inactive state while on duty, alerting supervisors to address the issue.



Anomaly Detection: The system is programmed to recognize patterns in normal behavior and detect anomalies that could indicate a security breach, such as loitering in restricted areas or abnormal movement during specific times of the day.



Smoking Detection: Functionality: Identifies and alerts when someone is smoking in non-smoking areas, ensuring adherence to safety and health regulations.



Regional Invasion Detection: Monitors specific regions for unauthorized entry, alerting security teams when someone enters a restricted area.



People Fall to the Ground : Detects when someone falls to the ground, triggering an immediate alert for potential medical emergencies or accidents.



Call to Test : Monitors and records instances where individuals are using phones or other communication devices, which may be prohibited in certain areas.



Face Detection and Identification : The system captures and identifies faces using advanced AI algorithms, comparing them against a database to allow or deny access, track individuals, or trigger alerts for unauthorized persons.

Each of these features can be integrated into an AI CCTV system, offering a comprehensive security solution that addresses a wide range of scenarios, from everyday operational safety to high-level security concerns. The customized algorithm allows the system to be tailored to specific environments, ensuring that it meets the unique needs of your clients.

CENTRALISED CONTROLLING



VIP Residence Security: The system monitors the entire property, including entrance points, perimeters, and interior spaces. If an unauthorized individual attempts to enter, the system alerts the security team and initiates a lockdown of the facility.

Confidential Meeting Rooms: In meeting rooms, the system's privacy mode is engaged automatically when VIPs enter, ensuring that no audio or video is recorded during confidential discussions. If someone tries to access the room without permission, the system triggers an alert.

It sounds like you're interested in a centralized building access system with a modern visitor management system that includes face recognition technology for entry and exit monitoring. Here's a concept for such a system.

This setup would provide a secure, efficient, and modern solution for managing access to your building, ensuring both security and convenience for residents and visitors.

WHY CHOOSE US ?

Global Standards. Custom Engineering.

We deliver precision-engineered, tailor-made solutions designed to meet each client's unique requirements while adhering to the highest international standards.

Powered by PAPILO Technologies

Through our strategic collaboration with PAPILO Technologies, we bring globally recognized expertise in VIP security systems, panic rooms, and intelligent automation, ensuring world-class innovation and reliability.

Advanced Security & Automation Expertise

By combining BEECONS' regional insight with PAPILO's engineering excellence, we seamlessly integrate mechanical systems with cyber-secure technologies for complete protection and smart living.

End-to-End Solutions Under One Roof

From concept and design to manufacturing and execution, we provide a fully integrated, hassle-free experience with a single point of accountability.

Driven by Innovation & Precision

Leveraging cutting-edge technology, we deliver high-performance, future-ready solutions with exceptional accuracy and consistency.

Built on Trust & Engineering Excellence

With strong foundations in instrumentation and electro-mechanical engineering, our solutions are engineered for durability, reliability, and long-term value.

REGIONAL OFFICE: 13,
BUILDING – 441, ROAD–
1805, BLOCK–318, AL HOORA,
MANAMA, KINGDOM OF BAHRAIN.
CONTACT NO– +973 3457 7373

INDIA OFFICE : NV PLAZA,
5TH FLOOR F–NO–501 MODEL
HOUSE LINE PANJAGUTTA
HYDERBAD INDIA–500082.
CONTACT NO +91 829 799 0022

INDIA FACTORY: 73 NEW STEEL
CITY DULAPALLY INDUSTRIAL
AREA. HYDERABAD INDIA–
500055.